



Institution of Railway Signal Engineers

The IRSE is the international Professional Engineering Institution for people working in the fields of:

- Train control systems
- Railway communications and data management
- Railway systems engineering

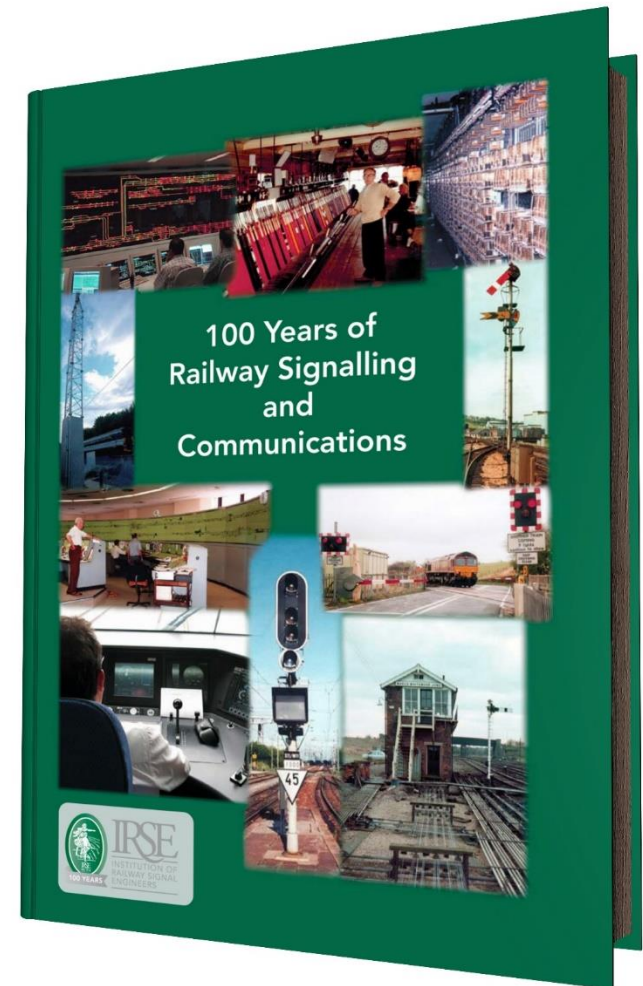
We welcome engineers, technicians, students, researchers, managers and directors who are involved or interested in these fields of work.



Why does the IRSE exist?

The purpose of the IRSE, set out in our Articles of Association over 100 years ago, is:

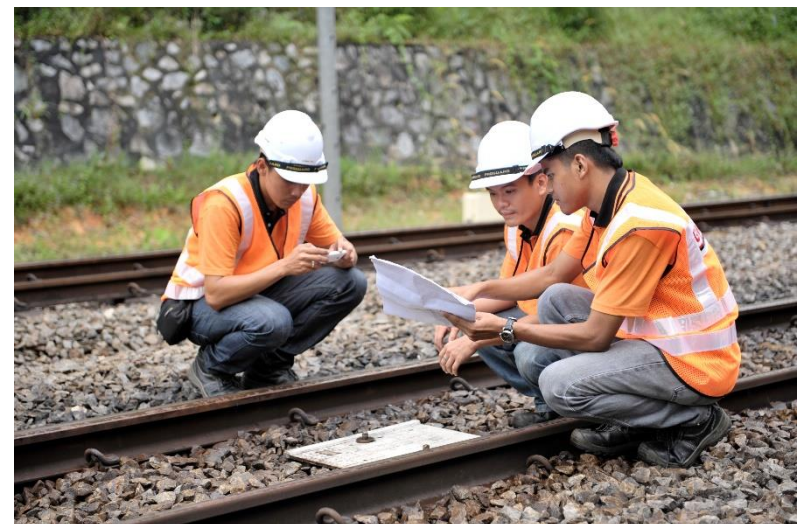
“ To promote high standards of professionalism amongst engineers; and to support the development of train control technologies for the benefit of the public. ”




The IRSE exists firstly and most importantly for the benefit of the public – in particular, the safety of those who use the world's railways.

We do this primarily by:

- Encouraging research and learning to advance the science and practice of train control and communications, and
- Promoting high standards of practice and professional care amongst those working in the industry.





Although the IRSE originated in the UK, half of our 5,500 members are living and working in other parts of the world.

We have IRSE Sections in:

- Asia-Pacific (Australasia, Hong Kong, India, Indonesia, Malaysia, Singapore)
- Europe (UK, France, Ireland, Netherlands, Switzerland)
- North America
- Southern Africa.

How do members benefit?

The IRSE provides a range of services for its members:

- We produce technical papers and textbooks
- We run international conferences and local meetings on relevant technical and non-technical topics
- We provide examinations and qualifications
- We publish IRSE NEWS, a monthly magazine containing technical papers, news and views from around the world



Sofia Angelara (WSP)

"The IRSE is key to my career development and I want to encourage others to join and gain the benefits of membership."



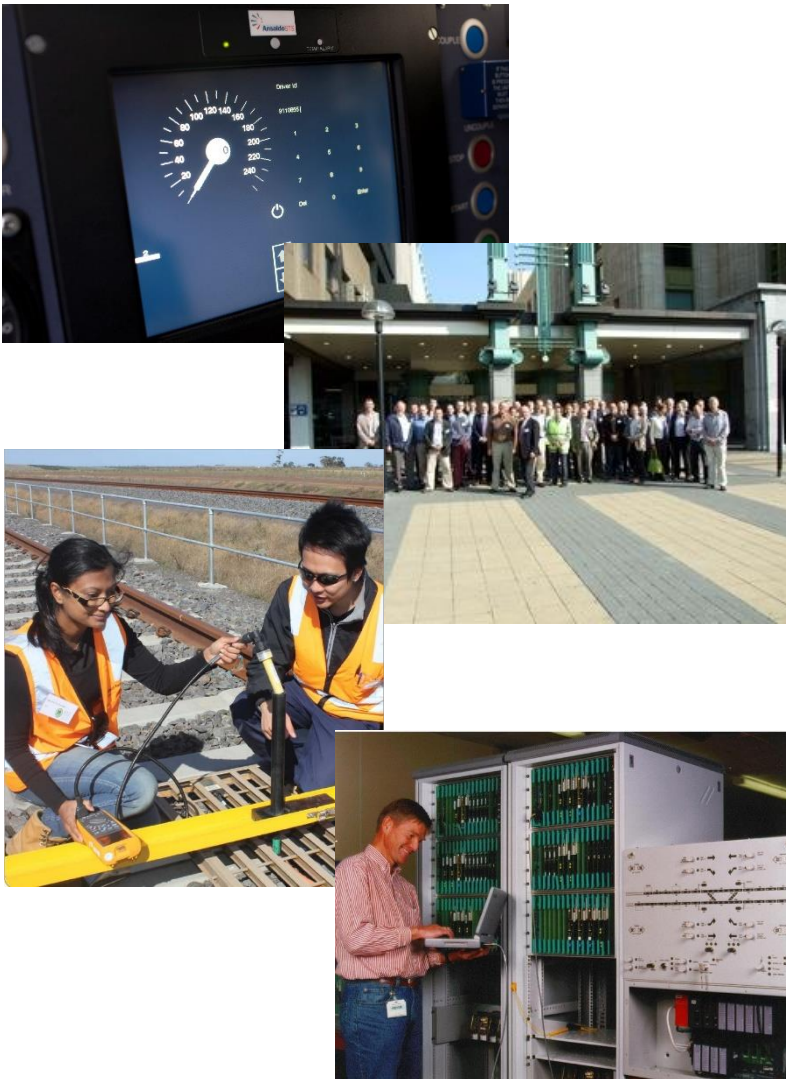
IRSE
INSTITUTION OF
RAILWAY SIGNAL
ENGINEERS

More about what we do for members

We also:

- Provide a framework for professional development, with recognition of competence and achievement
- Enable members to build an international network of professional contacts
- Provide learning material and study groups for the IRSE Exam
- Provide opportunities to see systems from other networks, suppliers and countries
- Register engineers with UK Engineering Council
- Provide bursaries for younger members to attend events



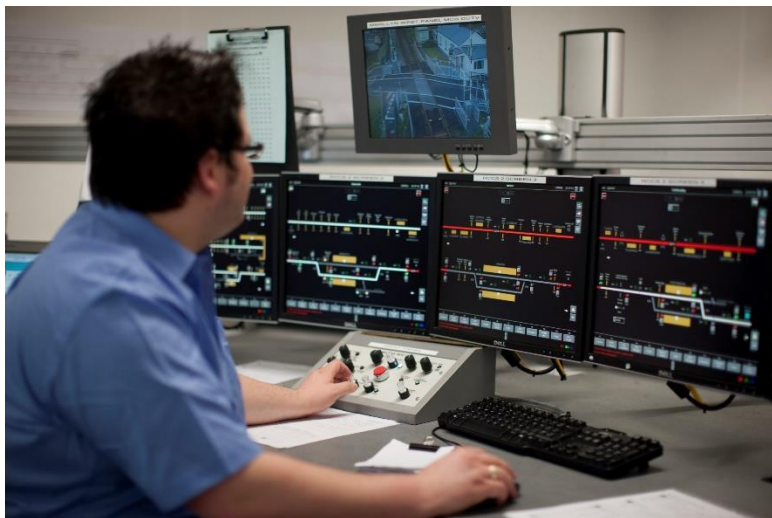


There are various grades of membership, and which one is right for you depends upon your experience, responsibility and knowledge:

- Affiliate
- Accredited Technician
- Associate Member
- Member
- Fellow
- Honorary Fellow
- Companion



Helping companies and employers



The IRSE aims to help companies and employers, as well as members:

- Professional development of staff, particularly younger engineers
- Certification of training courses
- Guidance on best practice in professional development
- A source of railway technical and operational information
- Operate the IRSE Licensing Scheme to give employers assurance about competence of individuals (used mainly, but not exclusively, in the UK)
- Promote high standards through our members' Code of Professional Conduct



We publish papers, books and online material regularly, for example:

- Books, such as “An Introduction to Railway Signalling” and “The ETCS Textbook”.
- Presidential Programme papers, such as those in 2015-16 on the theme of the “Data-Enabled Railway”.
- Articles on signalling in different parts of the world (including in the past year Australia, Portugal, Switzerland....)
- Fundamental Requirements for Train Control Systems.
- Papers on themes such as Systems Engineering, Cyber-Security and Automation.

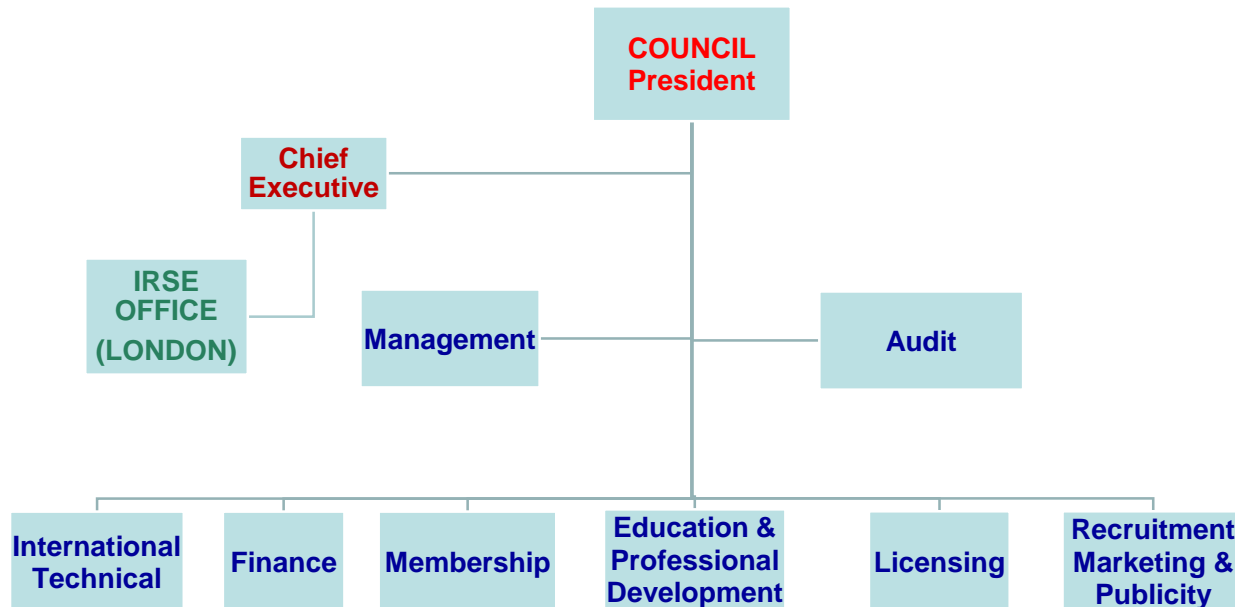


We run events at international and local levels, such as:

- The International Convention (recently in Sweden, France, Australia, and in 2016 in China).
- The ASPECT Conference, held in London in 2015, with the next one planned for Singapore in 2017.
- An annual Presidential Programme of Technical Papers
- Technical meetings in countries where we have Local Sections
- Technical visits and seminars on subjects such as Competence, Systems Engineering, EULYNX, and ERTMS



Our organisation and committees



The IRSE is governed by an elected Council of Members, led by the President (who serves a one year term of office). The Council is supported by the Chief Executive.

Various Committees (comprising IRSE members) perform a range of functions to enable the Institution to operate. A London-based team of staff supports the Institution's activities

IRSE Sections around the world have their own Organising Committees and elected officers. They operate in accordance with rules ("Byelaws") that are approved by the IRSE's Council.



How the IRSE helped my career

- Huge network of contacts
- Visibility of how others achieve the same thing in different countries in different ways
- Visits to countries and railways to learn best practices
- Gained valuable technical information from other experts – some of them world leaders in their field



www.irse.org